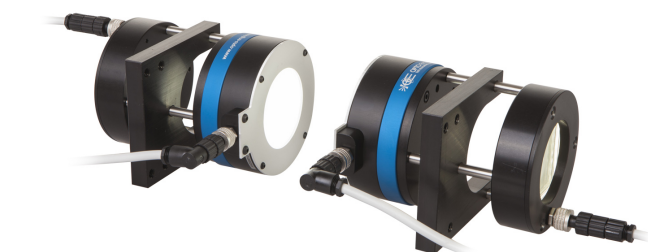


## Complete View-through illuminators system - small size medium power white



### SPECIFICATIONS

#### Lighting specifications

Illumination area diameter	(mm)	40
Optimal working distance	(mm)	5-25
Number of LEDs (Dome)		15
Light color, Peak wavelength (Dome)		white, 6000K
Spectral FWHM (Dome)	(nm)	-
Illuminance <sup>1</sup> (Dome)	(klux)	490
Number of LEDs (Backlight)		158
Light color, Peak wavelength (Backlight)		white, 6000K
Spectral FWHM (Backlight)	(nm)	-
Illuminance <sup>1</sup> (Backlight)	(klux)	5
Diffuser (Backlight)	(mm)	yes

#### Electrical specifications

Power Supply mode	(V)	Strobe only, constant current driving
Peak power Consumption	(W)	n.a.
Min pulse Current (Dome)	(A)	3.5
Max pulse Current (Dome)	(A)	7.5
Min pulse Current (Backlight)	(A)	3.5
Max pulse Current (Backlight)	(A)	17
Max pulse duration <sup>2</sup>	(ms)	2
Max duty cycle	(%)	1.5
Estimated MTBF <sup>3</sup>	(hours)	>50000
Connector		M8
Included cable		4x CBLT003

### KEY ADVANTAGES

#### Compact space-saving solution for inspection of fast moving object

Illuminates two sides of an object almost simultaneously.

#### Ultra-high power light output and strobe mode only operation

For the inspection of fast moving object and extended LED lifetime.

#### Rugged industrial design with built-in industrial connector

For easy integration with any machine vision system.

#### Modular configuration.

The **View-through system** is a unique space-saving illumination solution designed to illuminate two sides of an object. It consists of two symmetrical modules, each one made of two illumination units: a diffuse strobe dome illuminator (white color) and a special active "view-through" backlight unit (white color).

#### Mechanical specifications

Aperture diameter	(mm)	48.0
Length	(mm)	114.0
Width	(mm)	89.0
Height	(mm)	107.0
Mass	(g)	1500

#### Environment

Operating temperature	(°C)	0-40
Storage temperature	(°C)	0-50
Operating relative humidity	(%)	20-85 non condensing
Installation		Indoor use only

#### Eye safety

Risk group (CEI EN 62471:2010)	exempt
<sup>1</sup> Measured at maximum current and maximum working distance	
<sup>2</sup> At 25°C. At max pulse width (1ms), max pulse frequency = 15Hz	
<sup>3</sup> At 25°C	

### COMPATIBLE PRODUCTS

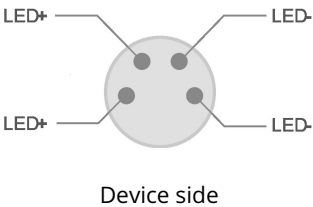
Full list of compatible products available [here](#).



A wide selection of innovative machine vision components.

All product specifications and data are subject to change without notice to improve reliability, functionality, design or other. Photos and pictures are for illustration purposes only. Data are reported by design, actual lens performance may vary due to manufacturing tolerances.

DOME AND RINGLIGHT CONNECTOR PINOUT

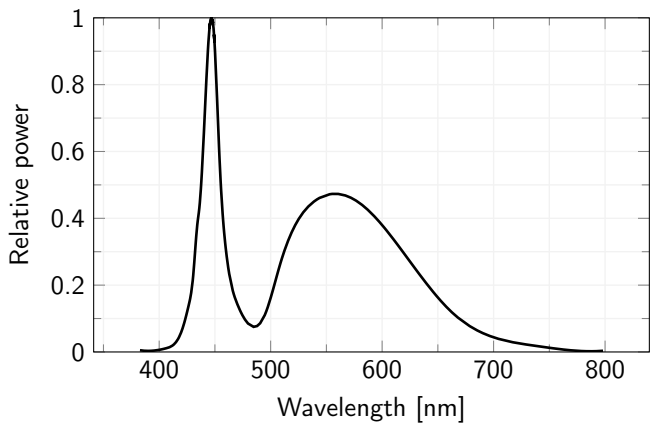


Function	Cable color
LED +	Brown
LED +	White
LED -	Blue
LED -	Black

ITEMS INCLUDED IN LTVTA1-W

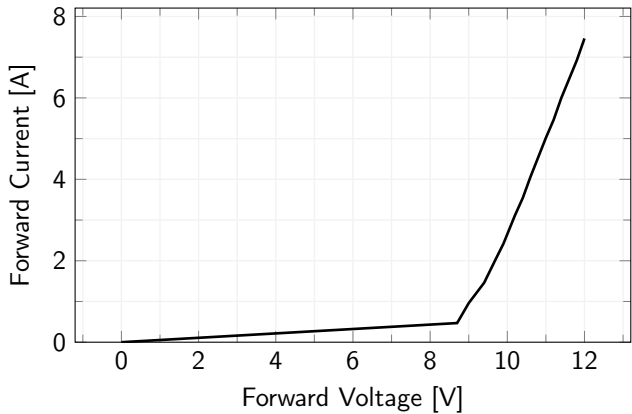
Description	Quantity
Dome unit	2
Active backlight view-through unit	2

LED color spectrum



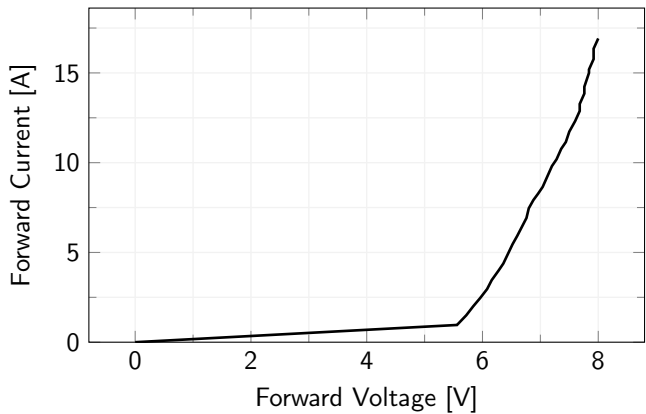
FORWARD CURRENT CHARACTERISTICS - DOME

Forward Current Characteristics



FORWARD CURRENT CHARACTERISTICS - RINGLIGHT

Forward Current Characteristics



All product specifications and data are subject to change without notice to improve reliability, functionality, design or other. Photos and pictures are for illustration purposes only. Data are reported by design, actual lens performance may vary due to manufacturing tolerances.